

Chronic Exposure to GLP-1R Agonists Promotes Homologous GLP-1 Receptor Desensitization In Vitro but Does Not Attenuate GLP-1R–Dependent Glucose Homeostasis In Vivo

Laurie L. Baggio, Jung-Guk Kim, and Daniel J. Drucker

Glucagon-like peptide-1 (GLP-1) stimulates glucose-dependent insulin secretion and inhibits food intake, gastric emptying, and glucagon secretion, actions that promote reduction of fasting and postprandial glycemia in subjects with type 2 diabetes. The rapid degradation of native GLP-1 has engendered interest in more stable longer-acting GLP-1 receptor agonists such as exendin-4 (Ex-4); however, the potential consequences of sustained GLP-1 receptor activation leading to receptor desensitization has not been extensively studied. We have now examined a range of GLP-1 receptor–dependent responses following treatment with Ex-4 using INS-1 cells in vitro and both wild-type control and MT-Ex-4 transgenic mice in vivo. Although both GLP-1 and Ex-4 acutely desensitized GLP-1 receptor–dependent cAMP accumulation in INS-1 cells, Ex-4 produced more sustained receptor desensitization, relative to GLP-1, in both acute (5–120 min) and chronic (24–72 h) experiments. PMA (4-phorbol 12-myristate 13-acetate) but not glucagon, glucose-dependent insulinotropic polypeptide (GIP), or epinephrine produced heterologous desensitization in vitro. MT-Ex-4 transgenic mice exhibited a reduced glycemic response to oral but not intraperitoneal glucose challenge following acute Ex-4 administration. In contrast, no differences in glycemic excursion or plasma insulin were observed after 1 week of twice-daily Ex-4 administration to wild-type versus MT-Ex-4 mice. Similarly, the levels of insulin, pdx-1, and GLP-1 receptor mRNA transcripts were comparable in wild-type and MT-Ex-4 transgenic mice after 1 week of Ex-4 administration. However, repeated Ex-4 administration significantly reduced food intake in MT-Ex-4 but not in wild-type mice. These findings illustrate that although Ex-4 is more potent than native GLP-1 in

producing GLP-1 receptor desensitization in vitro, chronic exposure to Ex-4 in normal or transgenic mice is not associated with significant downregulation of GLP-1 receptor–dependent responses coupled to glucose homeostasis in vivo. *Diabetes* 53 (Suppl. 3):S205–S214, 2004

Glucagon-like peptide-1 (GLP-1), a 30-amino acid peptide, is secreted from gut endocrine L-cells in a nutrient-dependent manner (1,2). GLP-1 enhances glucose-dependent insulin secretion and inhibits food intake, gastric emptying, and glucagon secretion, complementary actions that lower blood glucose in both normal subjects and in patients with type 2 diabetes. More recent studies have demonstrated that chronic GLP-1 administration expands islet mass via stimulation of β -cell proliferation and islet neogenesis and inhibition of β -cell apoptosis (3–5). Taken together, these actions have fostered considerable interest in the use of GLP-1R agonists for the treatment of type 2 diabetes.

Acute infusion of GLP-1 is associated with rapid lowering of blood glucose in both normal and diabetic subjects, and a more prolonged period of GLP-1 administration, for 24 h over a 7-day treatment period, produced a greater reduction in nocturnal and fasting glycemia than that obtained with a 16-h treatment protocol (6). Furthermore, chronic administration of native GLP-1 via repeated subcutaneous injection or continuous infusion reduces fasting and postprandial blood glucose and decreases HbA_{1c}, in association with modest but significant weight loss (7,8). These findings demonstrate the potential utility of native GLP-1 for the treatment of type 2 diabetes. Nevertheless, progress toward the development of GLP-1–based therapeutic agents has been slow, partly because of the rapid degradation and clearance of the native GLP-1 peptide.

GLP-1 contains an alanine at position 2 and is an excellent substrate for NH₂-terminal inactivation by the enzyme dipeptidyl peptidase IV (9,10). Furthermore, GLP-1 is rapidly cleared from the circulation via renal mechanisms that depend in part on neutral endopeptidase 24.11. Hence, levels of circulating intact GLP-1 fall rapidly after subcutaneous injection (11), posing considerable challenges for therapeutic programs using the native unmodified peptide. These findings have prompted the development of stable degradation-resistant GLP-1 analogs that

From the Banting and Best Diabetes Centre, Department of Medicine, Toronto General Hospital, University of Toronto, Ontario, Canada.

Address correspondence and reprint requests to Daniel J. Drucker, MD, Banting and Best Diabetes Centre, University of Toronto, Toronto General Hospital, 200 Elizabeth St., MBRW 4R-402, Toronto, Ontario Canada M5G 2C4. E-mail: d.drucker@utoronto.ca.

Received for publication 16 March 2004 and accepted in revised form 6 May 2004.

This article is based on a presentation at a symposium. The symposium and the publication of this article were made possible by an unrestricted educational grant from Servier.

D.J.D. is an advisory panel member and consultant for Amylin Pharmaceuticals.

AUC, area under the curve; Ex-4, exendin-4; GIP, glucose-dependent insulinotropic polypeptide; GLP-1, glucagon-like peptide-1; IBMX, isobutylmethyl xanthine; IPGTT, intraperitoneal glucose tolerance test; OGTT, oral glucose tolerance test; PMA, 4-phorbol 12-myristate 13-acetate.

© 2004 by the American Diabetes Association.

exert longer durations of action and more sustained pharmacokinetic profiles following parenteral administration.

Current pharmaceutical approaches are evaluating the effectiveness of GLP-1R agonists, such as liraglutide (NN2211) or exenatide (exendin-4 [Ex-4]), for once or twice-daily administration regimens, respectively (12,13). Despite sustained elevations in the circulating levels of these GLP-1R agonists, no evidence for tachyphylaxis or clinically significant receptor desensitization has been observed in clinical studies. Furthermore, there remains interest in developing even longer-acting GLP-1R agonists (3) that might theoretically achieve higher levels of circulating agonists and therefore require administration only once a week. Although short-term exposure to GLP-1 produces rapid receptor desensitization *in vitro*, there is little information about the potential for more stable long-acting GLP-1R agonists to produce receptor desensitization *in vivo*. Accordingly, we examined GLP-1R-dependent responses before and after repeated exposure to GLP-1 or Ex-4 using islet cells *in vitro* and both normal and transgenic mice *in vivo*.

RESEARCH DESIGN AND METHODS

Cell culture. INS-1 islet cells were cultured in RPMI 1640 medium containing 11 mmol/l glucose and supplemented with 10% (vol/vol) heat-inactivated FCS, 25 mmol/l HEPES [*N*-(2-hydroxyethyl)piperazine-*N*-(2-ethanesulphonic acid)], 100 IU/ml penicillin, 100 mg/ml streptomycin, 1 mmol/l sodium pyruvate, and 50 mmol/l mercaptoethanol in a humidified (95% air/5% CO₂) atmosphere. Tissue culture medium was changed every 24 h, and for desensitization studies, 100 nmol/l of fresh GLP-1 or Ex-4 (California Peptide Research, Napa, CA) was added daily. For experiments examining heterologous desensitization,

100 nmol/l glucose-dependent insulintropic polypeptide (GIP), glucagon, epinephrine (Sigma, St. Louis, MO), or 400 nmol/l 4-phorbol 12-myristate 13-acetate (PMA) (Sigma) were added to INS-1 cells for 1- or 24-h periods.

cAMP analyses. INS-1 cells were washed with PBS, incubated for 1 h with fresh RPMI media, then incubated with specific peptides for 30 min in the presence of 100 mmol/l isobutylmethyl xanthine (IBMX) in serum-free medium. Cells were then washed, 70% ethanol supplemented with 100 mmol/l IBMX was added, and extracts were stored at -20°C. Analysis of cAMP was via radioimmunoassay (Biomedical Technologies, Stoughton, MA). All experimental treatments were performed in triplicate or quadruplicate.

Mice. The generation and characterization of MT-Ex-4 transgenic mice on a C57BL/6 × SJL genetic background has been described (14). These mice express Ex-4 in multiple tissues, and plasma levels of Ex-4 generally ranged from 5 to 20 pg/ml. MT-Ex-4 mice and age-matched (12- to 16-week-old males) control (transgene-negative) C57BL/6 mice were maintained on a 12-h light/dark cycle with free access to standard rodent chow and water, except where noted. Experiments were carried out following protocols and guidelines approved by the Toronto General Hospital Animal Care Committee.

Glucose tolerance and plasma insulin measurements. Glucose tolerance was analyzed in control and MT-exendin transgenic mice before (basal) and following 1 week of twice-daily intraperitoneal Ex-4 (100 ng/mouse) or PBS administration. Oral glucose tolerance tests (OGTTs) or intraperitoneal glucose tolerance tests (IPGTTs) were carried out following an overnight fast (16–18 h). Fasting blood glucose was measured and Ex-4 (100 ng/mouse; California Peptide Research) or PBS was administered by intraperitoneal injection immediately before glucose loading. Glucose (1.5 mg/g body wt) was administered via a gavage tube or by intraperitoneal injection. Blood glucose levels were measured using a Glucometer Elite blood glucose meter (Bayer, Toronto, ON). For plasma insulin determination, a blood sample (100 µl) was removed from the tail vein during the 10- to 20-min time period after glucose administration and mixed immediately with a 10% vol of a chilled solution containing 5,000 KIU/ml Trasylol (Bayer), 32 mmol/l EDTA, and 0.1 nmol/l Diprotin A (Sigma). Plasma was stored at -80°C. Plasma insulin levels were measured using a rat/mouse insulin enzyme-linked immunosorbent assay kit (Linco Research, St. Charles, MO) with rat insulin as standard.

Pancreas insulin extraction and measurement. The pancreas was homogenized twice in ice-cold extraction medium [1N HCl containing 5% (vol/vol)

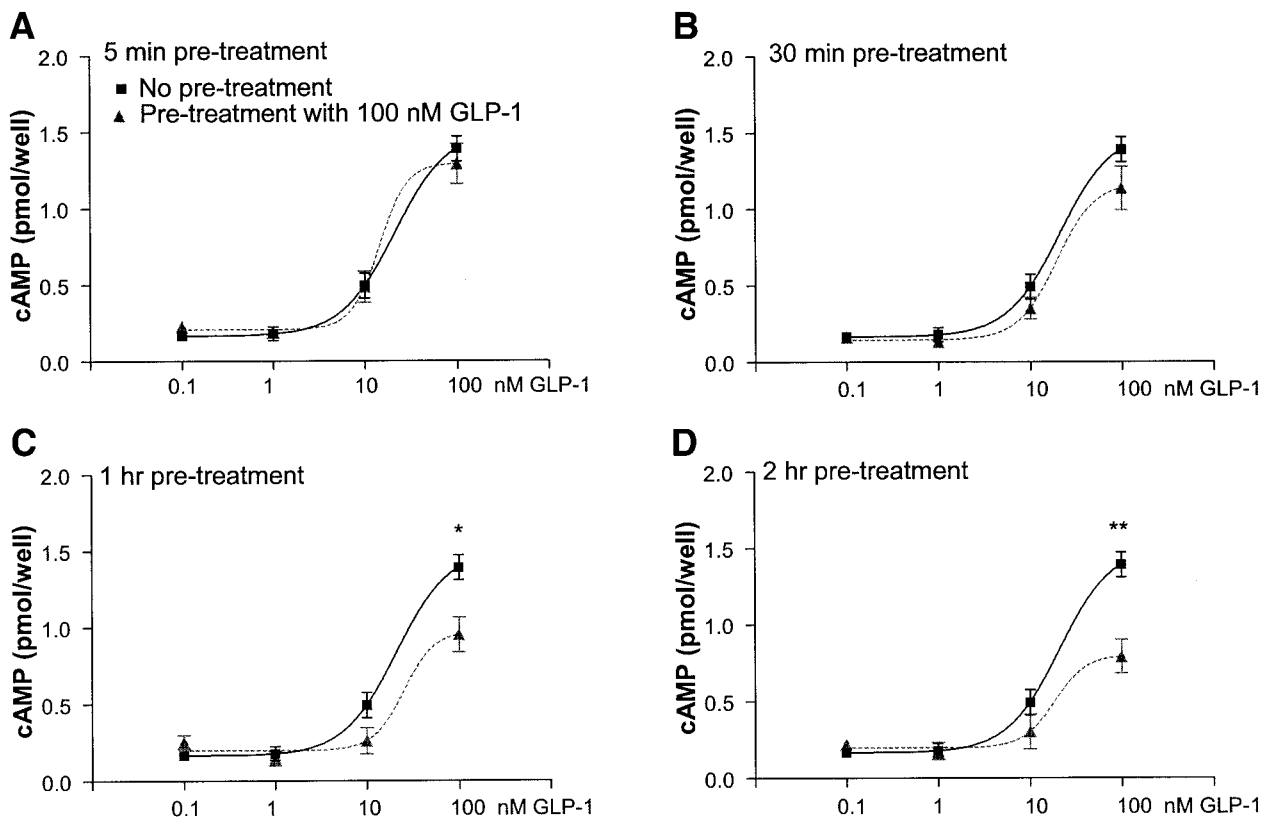


FIG. 1. Short-term homologous desensitization of GLP-1-stimulated cAMP production in INS-1 cells. Cells were pretreated with or without 100 nmol/l GLP-1 for indicated times (5 min to 2 h), followed by a 1-h resensitization period and subsequent stimulation with 0.1, 1, 10, and 100 nmol/l GLP-1 for 30 min. Data are means \pm SE of at least four independent experiments. * $P < 0.05$, ** $P < 0.01$.

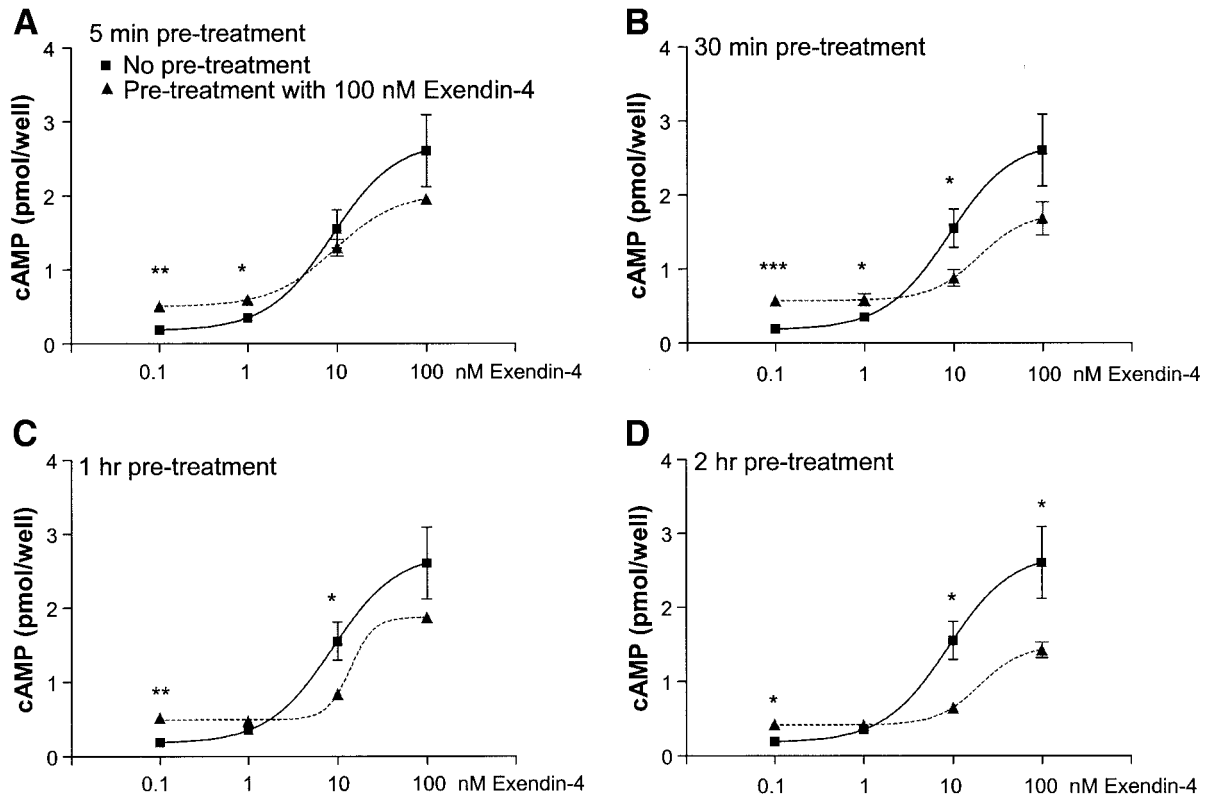


FIG. 2. Short-term desensitization of Ex-4-stimulated cAMP production in INS-1 cells. Cells were pretreated with or without 100 nmol/l Ex-4 for indicated times (5 min to 2 h), followed by a 1-h resensitization period and subsequent stimulation with 0.1, 1, 10, and 100 nmol/l Ex-4 for 30 min. Data are means \pm SE of at least four independent experiments. * $P < 0.05$, ** $P < 0.01$, *** $P < 0.001$.

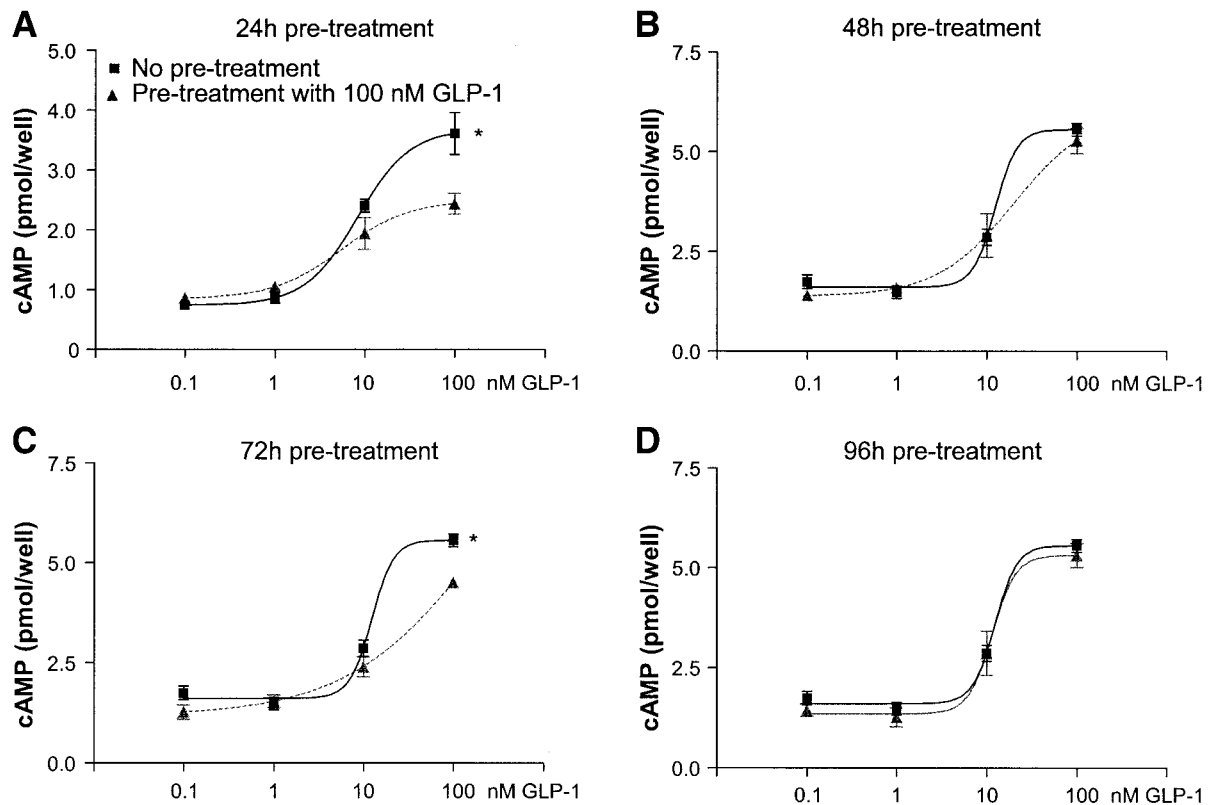


FIG. 3. Prolonged exposure to GLP-1 promotes homologous desensitization of cAMP production in INS-1 cells. Cells were pretreated with or without 100 nmol/l GLP-1 for indicated times (24–96 h), followed by a 1-h resensitization period without peptide and subsequent restimulation with 0.1, 1, 10, and 100 nmol/l GLP-1 for 30 min. * $P < 0.05$.

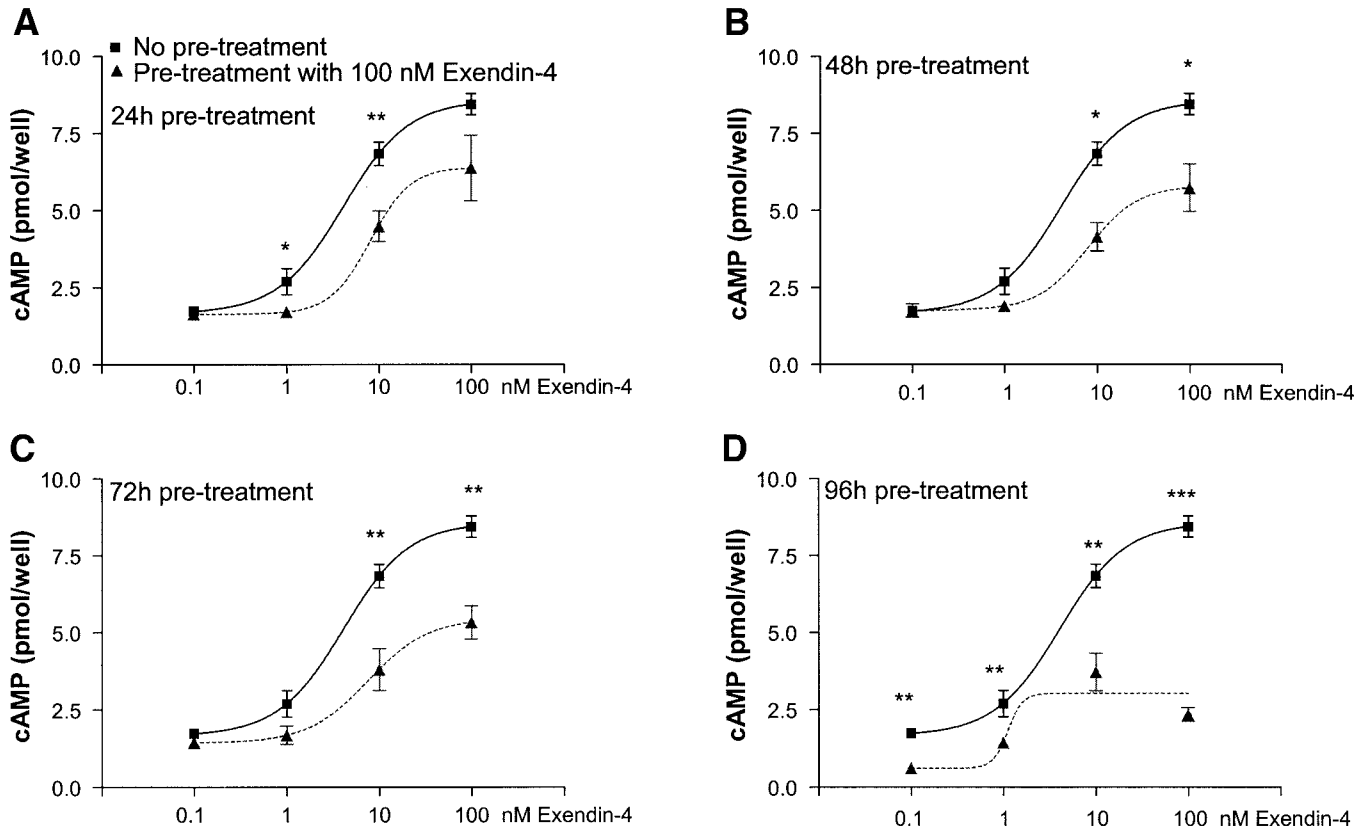


FIG. 4. Prolonged exposure to Ex-4 promotes desensitization of cAMP production in INS-1 cells. Cells were pretreated with or without 100 nmol/l Ex-4 for indicated times (24–96 h), followed by a 1-h resensitization period and subsequent stimulation with 0.1, 1, 10, and 100 nmol/l Ex-4 for 30 min. Data are means \pm SE of at least four independent experiments. * $P < 0.05$, ** $P < 0.01$, *** $P < 0.001$.

formic acid, 1% (vol/vol) trifluoroacetic acid, and 1% (wt/vol) NaCl). Peptides and small proteins were adsorbed from extracts by passage through a C18 silica cartridge (Waters Associates, Milford, MA). Adsorbed peptides were eluted in 80% (vol/vol) isopropanol containing 1% (vol/vol) trifluoroacetic acid. Pancreatic insulin was measured using a rat insulin radioimmunoassay kit (Linco Research) with rat insulin as a standard. Total protein concentration in pancreatic extracts was measured using the Bradford method (15) with dye reagent (Bio-Rad Laboratories, Hercules, CA).

RNA isolation and real-time RT-PCR. RNA was extracted from pancreas samples using TRI reagent (Sigma). Real-time quantitative PCR reactions were carried out using an Applied Biosystems 7900HT Sequence Detection System (Applied Biosystems, Foster City, CA). Primers and PCR conditions for mouse insulin, *pdx-1*, and the GLP-1R transcripts were those recommended by Applied Biosystems.

Feeding studies. Mice were weighed, given intraperitoneal injections of Ex-4 (100 ng/mouse), and then placed into individual cages containing preweighed rodent diet, with free access to water. At 2, 4, 8, and 24 h following Ex-4 administration, the chow was reweighed and total food intake (g/g body wt) was calculated.

Statistics. For analysis of cAMP, data were plotted using the nonlinear regression method and statistical significance was assessed with an unpaired Student's *t* test.

Data for analysis of wild-type and MT-exendin mice are presented as means \pm SE. Statistical significance was determined by Student's *t* test or ANOVA and Bonferroni's post-test using Prism Version 3.03 software (GraphPad Software, San Diego, CA). A *P* value < 0.05 was considered to be statistically significant.

RESULTS

Studies utilizing short-term incubations (5–30 min) with GLP-1 in islet cell lines have demonstrated desensitization of the GLP-1 receptor *in vitro* (16). To compare the effects of native GLP-1 versus the more stable degradation-resistant lizard peptide Ex-4 on GLP-1 receptor desensitization, we preincubated INS-1 islet cells with GLP-1 or Ex-4 from

5 min to 2 h, following which cells were rechallenged with the same peptide. No significant diminution in the magnitude of GLP-1-stimulated cAMP accumulation was seen following preincubation of INS-1 cells with 100 nmol/l GLP-1 for 5 or 30 min (Fig. 1); however, longer preincubation periods for 1–2 h produced a significant reduction in the cAMP response following subsequent rechallenge with GLP-1 (Fig. 1A–D). In contrast, INS-1 cells incubated with Ex-4 for 5 or 30 min exhibited higher basal levels of cAMP (Fig. 2A and B). Furthermore, a significantly diminished magnitude of cAMP accumulation following Ex-4 rechallenge was detected in cells preincubated with Ex-4 for as little as 30 min (Fig. 2B).

The majority of previous studies examining GLP-1 receptor desensitization in islet cells have used short (5–60 min) preincubation periods; however, little information is available about the consequences of long-term exposure of islet cells to GLP-1 receptor agonists. Accordingly, we assessed the cAMP response to GLP-1 or Ex-4 following 24- to 96-h pretreatment periods. Evidence for a diminished cAMP response was detected in INS-1 cells pretreated with 100 nmol/l GLP-1 for 24 or 72 h, but was only detected when cells were rechallenged with 100 nmol/l GLP-1 (Fig. 3A and C). In contrast, significantly reduced cAMP accumulation following rechallenge with Ex-4 was observed in cells preincubated with 100 nmol/l Ex-4 for 24–96 h (Fig. 4A–D), and significantly reduced cAMP accumulation was observed even at concentrations as low as 0.1 nmol/l Ex-4 after a 96-h pretreatment period (Fig. 4D).

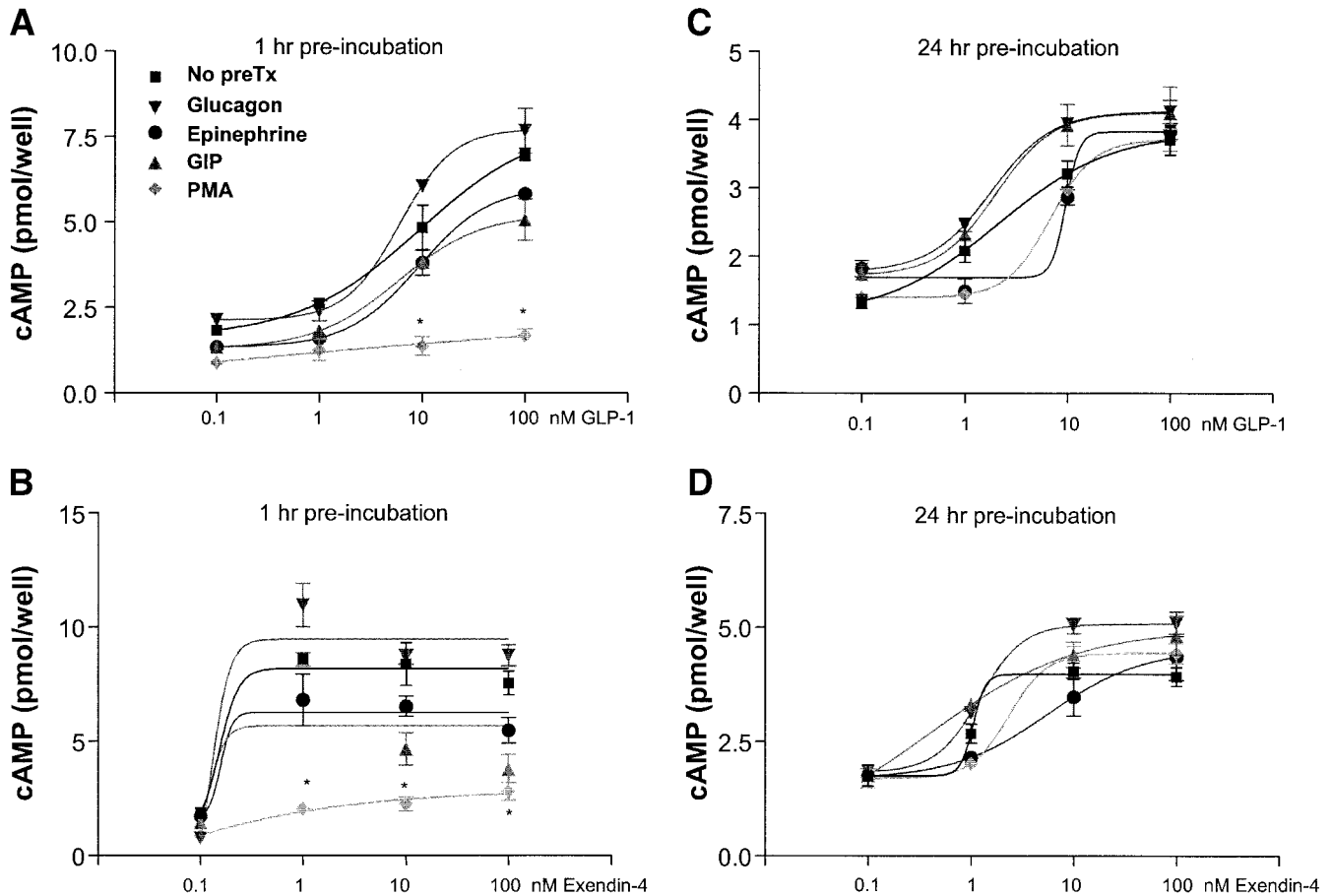


FIG. 5. Heterologous desensitization of GLP-1-stimulated (A and C) or Ex-4-stimulated (B and D) cAMP production in INS-1 cells. Cells were pretreated with 100 nmol/l glucagon, epinephrine, or GIP or 400 nmol/l PMA for 1 h (A and B) or 24 h (C and D), followed by a 1-h resensitization period and subsequent restimulation with 0.1, 1, 10, and 100 nmol/l GLP-1 (A and C) or Ex-4 (B and D) for 30 min. * $P < 0.05$.

The results of these homologous desensitization experiments demonstrated significant differences in the INS-1 cell response to preincubation and rechallenge with native GLP-1 versus Ex-4. To determine if INS-1 cells exhibited differential responsivity to these ligands following preincubation with heterologous agents that also activate the secretory pathway, we examined the cAMP response to GLP-1 or Ex-4 after preincubation of INS-1 cells with glucagon, GIP, epinephrine, or PMA. A 1-h preincubation with PMA was associated with significant diminution in the magnitude of GLP-1 or Ex-4-stimulated cAMP accumulation (Fig. 5A and B). In contrast, a 24-h preincubation with glucagon, GIP, or epinephrine was not associated with heterologous desensitization to subsequent rechallenge with GLP-1 or Ex-4 (Fig. 5C and D).

To determine whether repeated administration of Ex-4 was associated with evidence for GLP-1 receptor desensitization in vivo, we analyzed glucose homeostasis in wild-type and MT-Ex-4 transgenic mice treated with twice-daily Ex-4 for 7 days. Wild-type mice initially exhibited a greater magnitude (relative to MT-Ex-4 mice) of glycemic excursion following OGTT, and the area under the curve (AUC) glucose was significantly reduced following treatment with Ex-4, both before and after 1 week of twice-daily Ex-4 administration (Fig. 6A–D). Although the magnitude of AUC glycemic excursion following oral

glucose loading was reduced in MT-Ex-4 relative to control wild-type mice, exogenous Ex-4 reduced the AUC glucose in MT-Ex-4 mice both acutely and after 1 week of twice-daily EX-4 administration (Fig. 6A–D). Intriguingly, the levels of plasma insulin were significantly lower in saline- or Ex-4-treated MT-Ex-4 mice, relative to control mice, at the end of the 1-week treatment period (Fig. 6E and F). Intraperitoneal glucose tolerance was assessed in a separate group of control and MT-Ex-4 transgenic mice before and 1 week after twice-daily Ex-4 administration (Fig. 6G and H). In contrast to the results of the OGTT in wild-type versus MT-Ex-4 mice (Fig. 6A), glycemic excursion after IPGTT was identical in control- and MT-Ex-4 transgenic mice treated with a single acute injection of Ex-4 (Fig. 6G), and no differences in glucose clearance, relative to the baseline IPGTT, were observed after 1 week of twice-daily Ex-4 administration (Fig. 6H).

Body weight and basal food intake were not significantly different before the 1-week treatment period in wild-type versus MT-Ex-4 transgenic mice (Fig. 7A); however, 1 week of Ex-4 administration significantly inhibited food intake to a greater extent in MT-Ex-4 transgenic compared with wild-type control mice (Fig. 7B). No significant differences in body weight were detected after 1 week of Ex-4 administration in wild-type versus MT-Ex-4 mice (Fig. 7C). Although pancreatic weight was comparable in

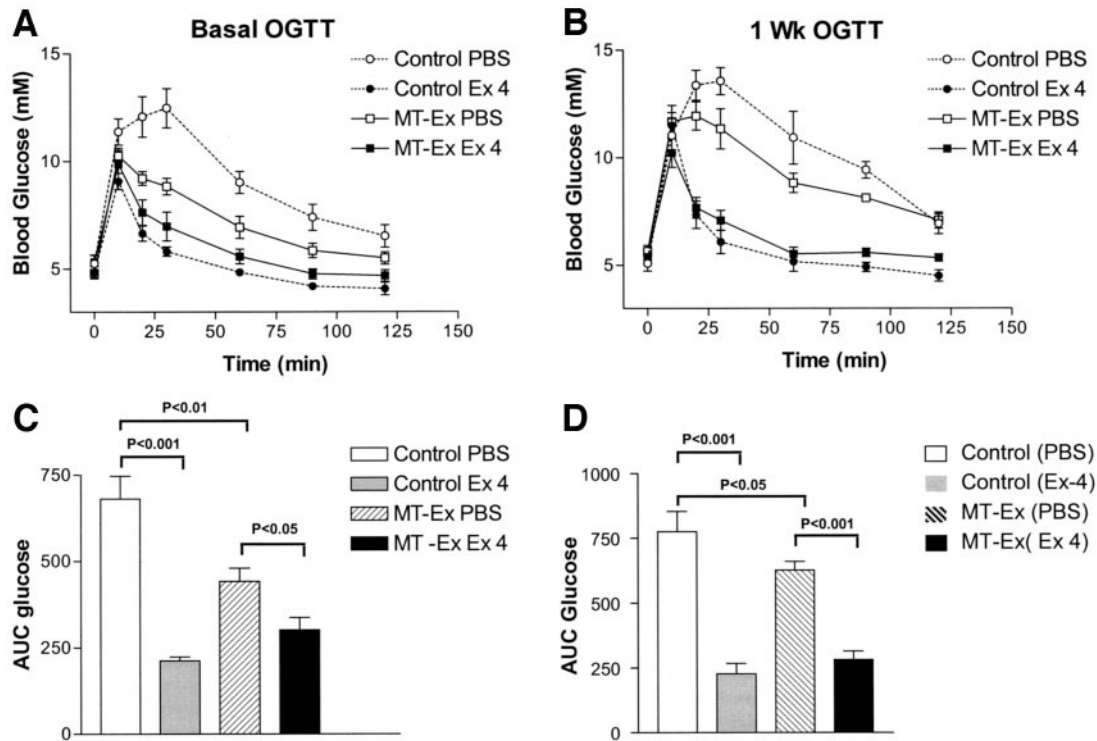


FIG. 6. Improved oral glucose tolerance in control and MT-exendin transgenic mice in response to Ex-4 treatment. Basal OGTT (A) and AUC glucose (C) in control and MT-exendin transgenic (MT-Ex) mice following intraperitoneal injection of PBS or 100 ng Ex 4. OGTT (B) and AUC glucose (D) in control and MT-exendin mice following 1 week of twice-daily administration of intraperitoneal PBS or Ex-4 (100 ng). Values are means \pm SE; $n = 4-8$ mice/group. Plasma insulin levels at the 10- to 20-min time point following glucose challenge during a basal OGTT before 1 week of Ex-4 administration in control and MT-Ex mice following IP injection of PBS or 100 ng Ex-4 (E) or levels of glucose-stimulated insulin during OGTT after 1 week of twice-daily administration of IP PBS or 100 ng Ex-4 (F). Values are means \pm SE; $n = 4-8$ mice/group. $**P < 0.01$ for PBS-treated control mice vs. PBS-treated MT-exendin mice; $\#P < 0.05$ for Ex-4-treated control mice vs. Ex-4-treated MT-Ex mice. G: Basal IPGTT and AUC glucose in control and MT-exendin mice following intraperitoneal injection of the first injection of Ex-4 (100 ng) at the start of the 1-week treatment period. H: IPGTT and AUC glucose in control and MT-exendin mice following 1 week of twice-daily administration of intraperitoneal PBS or Ex-4 (100 ng). Values are means \pm SE; $n = 4-5$ mice/group.

wild-type mice after saline versus Ex-4 administration, pancreatic weight was significantly increased in MT-Ex-4 mice following Ex-4 treatment (Fig. 7D). In contrast, pancreatic insulin content was significantly increased in wild-type mice, but not in MT-Ex-4 mice, after 1 week of Ex-4 administration (Fig. 7E).

To determine the effect of chronic repeated exposure to Ex-4 on pancreatic mRNA transcripts potentially upregulated (insulin, *pdx-1*) or downregulated (GLP-1 receptor) following GLP-1 receptor activation, we used real-time PCR to determine the levels of these mRNA transcripts at the end of the 1-week treatment period. No significant differences in the levels of pancreatic insulin, *pdx-1*, and GLP-1 receptor mRNA transcripts were detected in wild-type versus MT-Ex-4 saline-treated mice, and Ex-4 treatment had no significant effect on the levels of these mRNA transcripts in wild-type or transgenic mice at the end of the 7-day treatment period (data not shown).

DISCUSSION

Given the clinical interest in the therapeutic benefits of achieving sustained chronic elevations in plasma levels of GLP-1 receptor agonists, the potential for GLP-1 receptor desensitization has implications for the optimal use of GLP-1 receptor agonists. Receptors for glucagon, GLP-2, and GIP undergo rapid homologous desensitization in vitro (16-18). Similarly, short-term incubations of islet cells with native GLP-1 induces rapid GLP-1 receptor

desensitization (16,19), accompanied by phosphorylation of serine residues in the COOH-terminal tail of the receptor (20,21). Desensitization of the islet GLP-1 receptor was also observed with acute exposure to PMA (19), in agreement with our findings using PMA in the current study. Furthermore, mutation of specific serine residues in the COOH-terminal tail of the GLP-1 receptor results in diminished PMA-associated receptor desensitization (21,22).

Continuous exposure of isolated rat islets to the related incretin GIP for 20 h resulted in a reduction in the subsequent insulin secretory response to either GIP or glucose (23). Similarly, a 4-h infusion of GIP in rats produced an initial but nonsustained increase in plasma insulin, whereas a comparable infusion of GLP-1 maintained elevated levels of plasma insulin during the entire 4-h time period (24). Although exposure of islet cells to GIP produces homologous desensitization of the GIP receptor, exposure of HIT islet cells to GIP had no effect on the subsequent response to GLP-1. In contrast, preexposure of HIT cells to GLP-1 alone produced homologous GLP-1 receptor desensitization (16). These findings are in agreement with our data generated using INS-1 cells, which failed to detect evidence for heterologous desensitization of the GLP-1 receptor after exposure to epinephrine, GIP, or glucagon. Hence, despite overlapping biological actions converging on insulin secretion, GIP and GLP-1 do not seem to produce meaningful heterologous

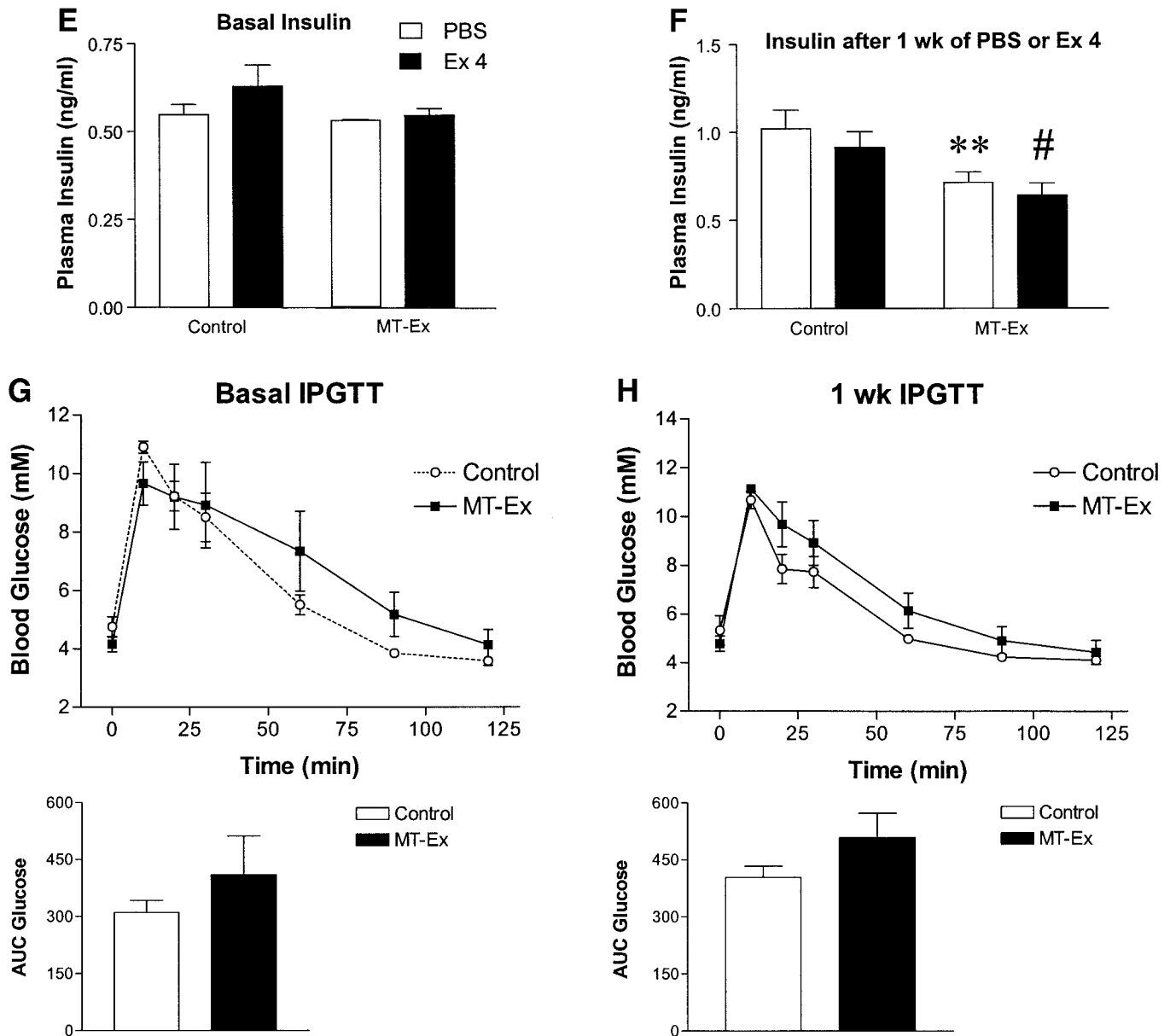


FIG. 6—Continued.

desensitization at their respective receptors in islet cell studies.

The rapid degradation of native GLP-1 by dipeptidyl peptidase IV has stimulated considerable interest in the development of degradation-resistant long-acting GLP-1 receptor agonists, such as Ex-4 (2). Surprisingly, there is little available data examining whether Ex-4 exhibits differences, relative to native GLP-1, in the magnitude of homologous GLP-1 receptor desensitization. Our findings using islet cells *in vitro* demonstrate that exposure to Ex-4 is associated with a greater degree of GLP-1 receptor desensitization compared with comparable incubations with GLP-1. Given the greater stability and prolonged activity of Ex-4 relative to native GLP-1 (25), it seems likely that islet cell GLP-1 receptors are exposed for a greater period of time to intact degradation-resistant Ex-4. No significant differences in receptor binding or post-receptor activation have been observed for Ex-4 relative to

GLP-1 (26) *in vitro*; however, Ex-4 is far more potent and exhibits an extended pharmacokinetic profile relative to native GLP-1 *in vivo* (25,27).

Several previous experiments have assessed the effects of continuous intracerebroventricular administration of GLP-1 on food intake. Chronic or intermittent intracerebroventricular GLP-1 administration inhibited food intake and reduced weight gain in Sprague Dawley and Zucker rats (28), whereas repeated intracerebroventricular GLP-1 inhibited and exendin (9-39) stimulated food intake in ad libitum fed rats (29). Similarly, chronic intermittent administration of GLP-1 receptor agonists to diabetic rodents is associated with inhibition of food intake, improvement in glycemia, and reduction in HbA_{1c}, demonstrating that repeated administration of structurally distinct GLP-1 receptor agonists is not associated with significant tachyphylaxis or a diminished therapeutic effect *in vivo* (3,30,31). In contrast, we did not observe differences in feeding behav-

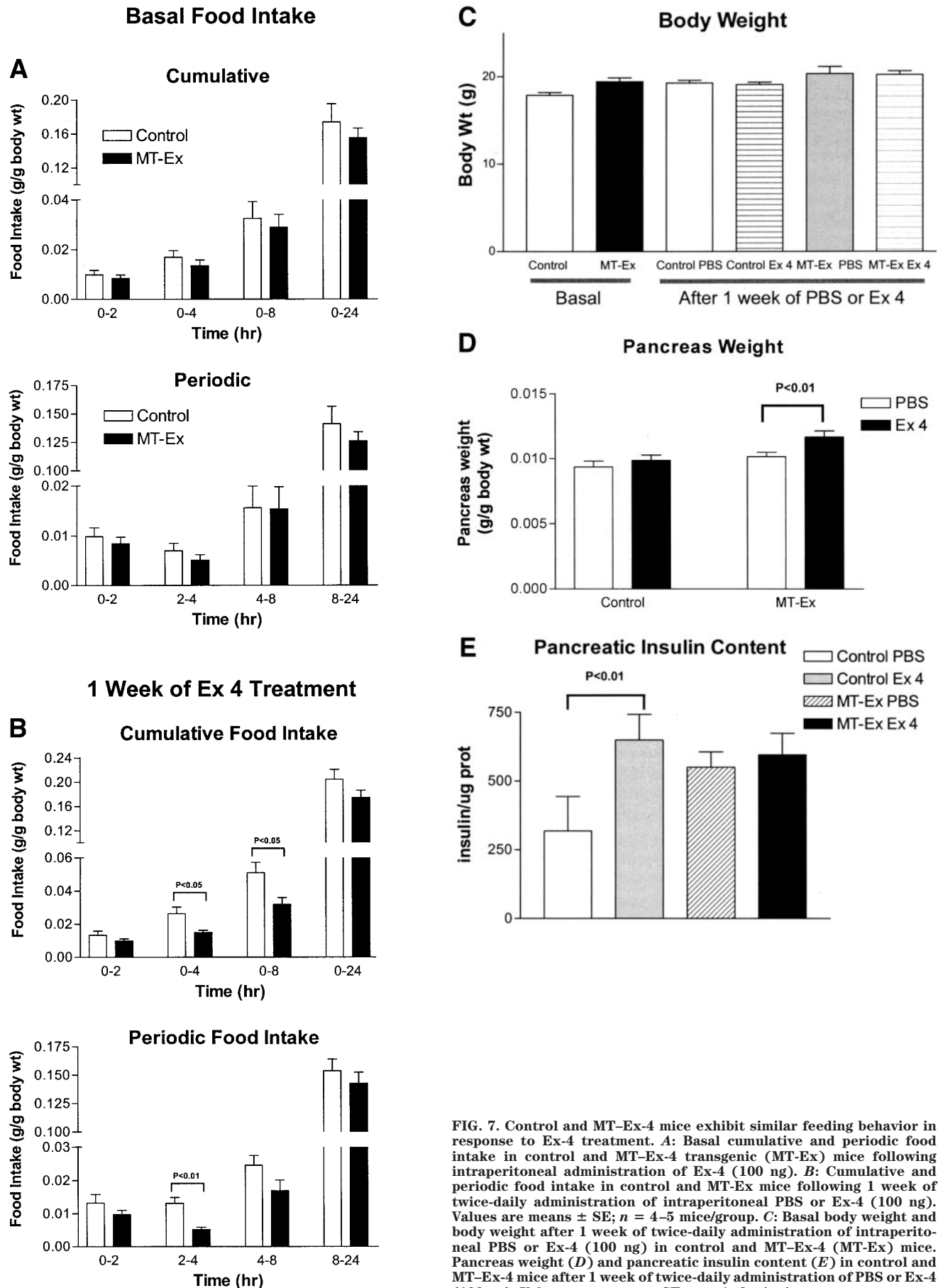


FIG. 7. Control and MT-Ex-4 mice exhibit similar feeding behavior in response to Ex-4 treatment. **A:** Basal cumulative and periodic food intake in control and MT-Ex-4 transgenic (MT-Ex) mice following intraperitoneal administration of Ex-4 (100 ng). **B:** Cumulative and periodic food intake in control and MT-Ex mice following 1 week of twice-daily administration of intraperitoneal PBS or Ex-4 (100 ng). Values are means \pm SE; $n = 4-5$ mice/group. **C:** Basal body weight and body weight after 1 week of twice-daily administration of intraperitoneal PBS or Ex-4 (100 ng) in control and MT-Ex-4 (MT-Ex) mice. **D:** Pancreas weight and pancreatic insulin content (E) in control and MT-Ex-4 mice after 1 week of twice-daily administration of PBS or Ex-4 (100 ng). Values are means \pm SE; $n = 4-8$ mice/group.

ior or body weight in control versus MT-Ex-4 transgenic mice either before or after a 1-week treatment period. Moreover, MT-Ex-4 transgenic mice appeared significantly more sensitive, relative to wild-type controls, to the anorexic effects of exogenous Ex-4 *in vivo*. Hence, central GLP-1 receptor systems important for transducing the satiety effects of GLP-1 receptor agonists do not appear to undergo significant functional downregulation *in vivo*.

Our studies examining the potential for Ex-4 to produce GLP-1 receptor desensitization were prompted in part by the phenotype of MT-Ex-4 transgenic mice (14). MT-Ex-4 mice correctly process preproexendin to biologically active Ex-4 (32) and exhibit no obvious disturbances in growth, feeding behavior, islet size, or basal glucose homeostasis, despite producing circulating levels of Ex-4 from birth that would be predicted to be associated with therapeutic GLP-1 receptor-dependent actions *in vivo* (14). The results of our current experiments demonstrate that MT-Ex-4 mice exhibit comparatively reduced (relative to wild-type control) acute glycemic responses to initial rechallenge with Ex-4 following an OGTT but not following IPGTT. These findings raise the possibility that MT-Ex-4 mice exhibit modest but detectable differences in the degree of GLP-1 receptor desensitization at the levels of gastric emptying versus insulin secretion *in vivo*. Nevertheless, we did not observe detectable differences in the glycemic response of wild-type versus MT-Ex-4 mice following 1 week of Ex-4 administration. Hence, these findings argue against the development of significant GLP-1 receptor desensitization coupled to control of glucose homeostasis *in vivo*.

Intriguingly, we detected increased pancreatic insulin content in wild-type but not in MT-Ex-4 transgenic mice following 1 week of Ex-4 administration. Somewhat surprisingly, however, we did not detect evidence for differences in the levels of GLP-1 receptor-dependent mRNA transcripts in wild-type versus MT-Ex-4 transgenic mice, and no changes in the levels of these transcripts were observed after 1 week of twice-daily Ex-4 administration. Hence, upregulation of "classic" GLP-1-regulated genes such as *pdx-1* or *insulin* is not an invariable consequence following Ex-4 administration to normoglycemic mice.

The realization that sustained exposure to GLP-1 receptor agonists may produce therapeutically desirable effects on glucose control and energy homeostasis in subjects with type 2 diabetes (2) raises the question of whether continuous GLP-1 receptor activation might potentially be associated with clinically meaningful desensitization of the GLP-1 receptor *in vivo*. A 6-week study of native GLP-1 administered by continuous subcutaneous infusion produced significant reductions in fasting and postprandial glucose in association with reductions in HbA_{1c} and body weight (33). Similar glucose-lowering results were obtained in a study of eight subjects treated with continuous subcutaneous GLP-1 infusion for 12 weeks (8). Hence, sustained elevations in levels of circulating GLP-1 are not associated with a detectable loss of biological activity *in vivo*. Similarly, twice-daily administration of Ex-4 in subjects with type 2 diabetes produced a significant reduction in fructosamine and HbA_{1c} over a 12-week study period (13). Hence, although our studies clearly demonstrate that

the GLP-1 receptor exhibits the capacity for receptor desensitization following continuous exposure to GLP-1 receptor agonists *in vitro*, the available evidence clearly indicates that continuous activation of the GLP-1 receptor in diabetic subjects does not lead to a detectable loss of GLP-1 receptor-dependent biological activity *in vivo*. Nevertheless, as GLP-1 receptor agonists do not achieve a normalization of fasting or postprandial glucose in all treated diabetic subjects, increased understanding of the molecular determinants linking GLP-1 receptor activation to sustained lowering of blood glucose may be useful for optimizing therapeutic outcomes with these agents in future studies.

ACKNOWLEDGMENTS

This work was supported in part by operating grants from the Canadian Diabetes Association and the Juvenile Diabetes Research Foundation to D.J.D. D.J.D. is supported by a Canada research chair in regulatory peptides.

We thank Xiemin Cao for assistance with the real-time PCR experiments.

REFERENCES

1. Drucker DJ: Biological actions and therapeutic potential of the glucagon-like peptides. *Gastroenterology* 122:531–544, 2002
2. Drucker DJ: Enhancing incretin action for the treatment of type 2 diabetes. *Diabetes Care* 26:2929–2940, 2003
3. Kim JG, Baggio LL, Bridon DP, Castaigne JP, Robitaille MF, Jette L, Benquet C, Drucker DJ: Development and characterization of a glucagon-like peptide 1-albumin conjugate: the ability to activate the glucagon-like peptide 1 receptor *in vivo*. *Diabetes* 52:751–759, 2003
4. Li Y, Hansotia T, Yusta B, Ris F, Halban PA, Drucker DJ: Glucagon-like peptide-1 receptor signaling modulates beta cell apoptosis. *J Biol Chem* 278:471–478, 2003
5. Drucker DJ: Glucagon-like peptides: regulators of cell proliferation, differentiation, and apoptosis. *Mol Endocrinol* 17:161–171, 2003
6. Larsen J, Hylleberg B, Ng K, Damsbo P: Glucagon-like peptide-1 infusion must be maintained for 24 h/day to obtain acceptable glycemia in type 2 diabetic patients who are poorly controlled on sulphonylurea treatment. *Diabetes Care* 24:1416–1421, 2001
7. Zander M, Madsbad S, Madsen JL, Holst JJ: Effect of 6-week course of glucagon-like peptide 1 on glycaemic control, insulin sensitivity, and beta-cell function in type 2 diabetes: a parallel-group study. *Lancet* 359:824–830, 2002
8. Meneilly GS, Greig N, Tildesley H, Habener JF, Egan JM, Elahi D: Effects of 3 months of continuous subcutaneous administration of glucagon-like peptide 1 in elderly patients with type 2 diabetes. *Diabetes Care* 26:2835–2841, 2003
9. Kieffer TJ, McIntosh CH, Pederson RA: Degradation of glucose-dependent insulinotropic polypeptide and truncated glucagon-like peptide 1 *in vitro* and *in vivo* by dipeptidyl peptidase IV. *Endocrinology* 136:3585–3596, 1995
10. Mentlein R, Gallwitz B, Schmidt WE: Dipeptidyl-peptidase IV hydrolyses gastric inhibitory polypeptide, glucagon-like peptide-1(7–36)amide, peptide histidine methionine and is responsible for their degradation in human serum. *Eur J Biochem* 214:829–835, 1993
11. Ritzel R, Orskov C, Holst JJ, Nauck MA: Pharmacokinetic, insulinotropic, and glucagonostatic properties of GLP-1 [7–36 amide] after subcutaneous injection in healthy volunteers: dose-response relationships. *Diabetologia* 38:720–725, 1995
12. Agerso H, Vicini P: Pharmacodynamics of NN2211, a novel long acting GLP-1 derivative. *Eur J Pharmacol Sci* 19:141–150, 2003
13. Fineman MS, Bicsak TA, Shen LZ, Taylor K, Gaines E, Varns A, Kim DW, Baron AD: Effect on glycemic control of synthetic exendin-4 (AC2993) additive to existing metformin and/or sulphonylurea treatment in patients with type 2 diabetes. *Diabetes Care* 27:2370–2377, 2003
14. Baggio L, Adatia F, Bock T, Brubaker PL, Drucker DJ: Sustained expression of exendin-4 does not perturb glucose homeostasis, β cell mass or food intake in metallothionein-preproexendin transgenic mice. *J Biol Chem* 275, 2000
15. Bradford MM: A rapid and sensitive method for the quantitation of

- microgram quantities of protein utilizing the principle of protein dye binding. *Anal Chem* 72:248–254, 1976
16. Fehmman HC, Habener JF: Homologous desensitization of the insulinotropic glucagon-like peptide-1(7–37) receptor on insulinoma (HIT-T15) cells. *Endocrinology* 128:2880–2888, 1991
 17. DeRubertis FR, Craven P: Reduced sensitivity of the hepatic adenylate cyclase-cyclic AMP system to glucagon during sustained hormonal stimulation. *J Clin Invest* 57:435–443, 1976
 18. Walsh NA, Yusta B, DaCabra MP, Anini Y, Drucker DJ, Brubaker PL: Glucagon-like peptide-2 receptor activation in the rat intestinal mucosa. *Endocrinology* 144:4385–4392, 2003
 19. Gromada J, Dissing S, Rorsman P: Desensitization of the glucagon-like peptide 1 receptors in insulin-secreting bTC3 cells: role of PKA-independent mechanisms. *Br J Pharmacol* 118:769–775, 1996
 20. Widmann C, Dolci W, Thorens B: Internalization and homologous desensitization of the GLP-1 receptor depend on phosphorylation of the receptor carboxyl tail at the same three sites. *Mol Endocrinol* 11:1094–1102, 1997
 21. Widmann C, Dolci W, Thorens B: Desensitization and phosphorylation of the glucagon-like peptide-1 (GLP-1) receptor by GLP-1 and 4-phorbol 12-myristate 13-acetate. *Mol Endocrinol* 10:62–75, 1996
 22. Widmann C, Dolci W, Thorens B: Heterologous desensitization of the glucagon-like peptide-1 receptor by phorbol esters requires phosphorylation of the cytoplasmic tail at four different sites. *J Biol Chem* 271:19957–19963, 1996
 23. Hinke SA, Pauly RP, Eshes J, Kerridge P, Demuth HU, McIntosh CH, Pederson RA: Role of glucose in chronic desensitization of isolated rat islets and mouse insulinoma (betaTC-3) cells to glucose-dependent insulinotropic polypeptide. *J Endocrinol* 165:281–291, 2000
 24. Tseng CC, Boylan MO, Jarboe LA, Usdin TB, Wolfe MM: Chronic desensitization of the glucose-dependent insulinotropic polypeptide receptor in diabetic rats. *Am J Physiol* 270:E661–E666, 1996
 25. Young AA, Gedulin BR, Bhavsar S, Bodkin N, Jodka C, Hansen B, Denaro M: Glucose-lowering and insulin-sensitizing actions of exendin-4: studies in obese diabetic (ob/ob, db/db) mice, diabetic fatty Zucker rats, and diabetic rhesus monkeys (*Macaca mulatta*). *Diabetes* 48:1026–1034, 1999
 26. Goke R, Fehmman H-C, Linn T, Schmidt H, Krause M, Eng J, Goke B: Exendin-4 is a high potency agonist and truncated exendin-(9–39)-amide an antagonist at the glucagon-like peptide 1-(7–36)-amide receptor of insulin-secreting β -cells. *J Biol Chem* 268:19650–19655, 1993
 27. Nielsen LL, Young AA, Parkes DG: Pharmacology of exenatide (synthetic exendin-4): a potential therapeutic for improved glycemic control of type 2 diabetes. *Regul Pept* 117:77–88, 2004
 28. Davis HR, Jr, Mullins DE, Pines JM, Hoos LM, France CF, Compton DS, Graziano MP, Sybertz EJ, Strader CD, Van Heek M: Effect of chronic central administration of glucagon-like peptide-1 (7–36) amide on food consumption and body weight in normal and obese rats. *Obes Res* 6:147–156, 1998
 29. Meeran K, O'Shea D, Edwards CM, Turton MD, Heath MM, Gunn I, Abusnana S, Rossi M, Small CJ, Goldstone AP, Taylor GM, Sunter D, Steere J, Choi SJ, Ghatei MA, Bloom SR: Repeated intracerebroventricular administration of glucagon-like peptide-1-(7–36) amide or exendin-(9–39) alters body weight in the rat. *Endocrinology* 140:244–250, 1999
 30. Szayna M, Doyle ME, Betkey JA, Holloway HW, Spencer RG, Greig NH, Egan JM: Exendin-4 decelerates food intake, weight gain, and fat deposition in Zucker rats. *Endocrinology* 141:1936–1941, 2000
 31. Rolin B, Larsen MO, Gotfredsen CF, Deacon CF, Carr RD, Wilken M, Knudsen LB: The long-acting GLP-1 derivative NN2211 ameliorates glycaemia and increases beta-cell mass in diabetic mice. *Am J Physiol Endocrinol Metab* 283:E745–E752, 2002
 32. Adatia FA, Baggio LL, Xiao Q, Drucker DJ, Brubaker PL: Cellular specificity of proexendin-4 processing in mammalian cells in vitro and in vivo. *Endocrinology* 143:3464–3471, 2002
 33. Zander M, Taskiran M, Toft-Nielsen MB, Madsbad S, Holst JJ: Additive glucose-lowering effects of glucagon-like peptide-1 and metformin in type 2 diabetes. *Diabetes Care* 24:720–725, 2001